

PANORAMA

WINTER 2025

In this issue:

Summit blesses new cottages
Campus construction update
Hybrid Homes coming to Summit
Over 100 Club celebrates
Meet Your Neighbors
Christmas and New Year's parties
Summit launches new Crown Club
Residents, team members volunteer
Upcoming Events & Appointments
Summit Sales Center opens



The
SUMMIT



Bruce and Beverly Peterson attend a cottage blessing for their new home with team members and residents of The Summit.

COTTAGE BLESSINGS

The Summit celebrates cottage homes for residents of new neighborhood

Bruce and Beverly Peterson walked into their lakeside cottage on a chilly morning. It was their first time through the cottage, under construction along with 17 others in a new neighborhood on The Summit campus.

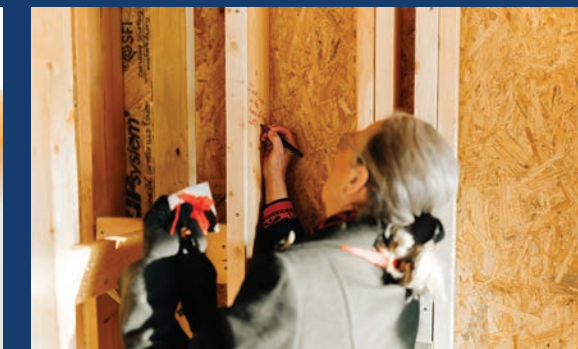
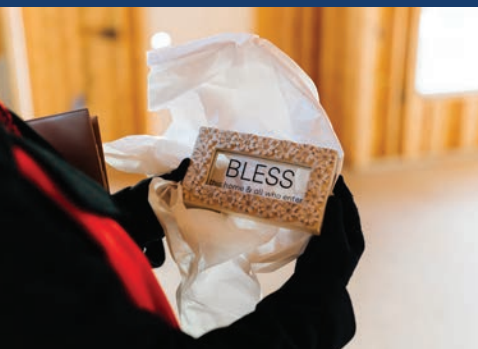
“I had trouble envisioning what it would look like and now I can. It’s beautiful,” Beverly said.

The couple gathered with team members, including

Chaplain Jacob Palma, to bless their new home. “It’s a special occasion to commemorate this house to the Lord,” Palma said, before reading a few scriptures.

The couple, moving in a few months, wrote a Bible verse—Colossians 3:14—on the a stud in the garage.

Palma prayed that the couple would have peace and joy in their new residence. “I already feel that here,” Beverly said.



This is one of many cottage blessings team members have organized for soon-to-be residents of the 18-cottage neighborhood.

“We wanted to have separate celebrations for each depositor,” Executive Director Kristi Martin said. “It’s an opportunity to write blessings on the home and to pray over their home and future here at The Summit.”

Marketing Director Brenda Dixon wrote “bless all who enter this home” on the floor just beyond the front door.

Martin wrote “may your new home be filled with love, laughter, faith and many blessings for your future” below the fire place.

“We want people to invite friends, family and clergy into the home that is under construction,” Dixon said.

The Petersons will be among the first group of residents to move into six new cottages this summer, followed by two more groups later this year. This will be a momentous occasion as we celebrate the beginning of the completion of Phase 1 in our expansion.

“It has been an honor for me to serve new residents by leading cottage blessings as their chaplain. Being involved with each cottage blessing has been a vital piece to providing spiritual care and support to new residents long before their move in date,” Palma said.

The cottage blessing was a special way to commemorate this next chapter in their life together.

“It almost made me cry. It was so sweet and so warm,” Beverly said.



Above, Doug and Debbie Ladd invited their clergy to the cottage blessing and had communion with team members. Below, Sharon Carter-McKenney (second from left) attends the cottage blessing for her home.



CAMPUS CONSTRUCTION

The Summit makes progress on 18-cottage neighborhood

Rapid progress is happening on The Summit's campus-wide expansion, an \$80 million investment by LifeSpire of Virginia.

Eighteen new cottages are all under roof, marking a major milestone in the new neighborhood inside the Life Plan Community.

The first six cottages will be ready for residents to move in this June with another six complete in the fall. The final six cottages will be finished in early winter. All 18 cottages are spoken for.

This summer, The Summit will break ground on the Elm and Frazier buildings—each with 11 spacious Hybrid Homes—along Summit Lake.

Phase two of the campus expansion will also include a 30,000-square-foot Independent Living community space—featuring a saltwater pool, tavern and dining room—and a 20-bed neighborhood, attached to Assisted Living, providing memory support.

The expansion will position The Summit to be Central Virginia's premiere destination for retirement living.





HYBRID HOMES

A first-of-its-kind living experience in Lynchburg, Virginia

The Summit will break ground on the Elm and Frazier buildings, each with 11 Hybrid Homes, this year.

Combining the freedom and privacy of a single-family home with the convenience and security of an apartment, Hybrid Homes are available for pre-sale. Highlights of the Hybrid Homes include:

- Spacious and light-filled residences: Each Hybrid Home boasts expansive windows on multiple sides, bathing the interiors in abundant natural light.
- Open and creative floor plans: Enjoy generous living spaces designed for comfortable living and effortless entertaining.
- First-class amenities: stylish, fully-equipped kitchens, in-unit laundry for added convenience, and private patios or balconies extend your living space outdoors.
- The comfort of a private garage: Enjoy the convenience of secure parking right outside your door.
- A vibrant campus lifestyle: Enjoy a vibrant campus with a wealth of activities, events, and amenities to keep you engaged and connected.



Call the Marketing Team at 434.333.2138 to reserve your Hybrid Home.

Friendships make move worthwhile

Bill and Charlotte Shimmel turned one room in the couple's lakeside cottage into a craft room. Decorated with Charlotte's paintings, the room also includes her weaving supplies, sewing machine and hand-stitched quilts.

Since moving to The Summit in September, Charlotte has found a community of other artists and crafters.

"What really sealed the deal for us was the attitude of the people here. They are just so friendly," she said.

Bill, who spent his career working for university Cooperative Extension offices in Wisconsin, Vermont and South Carolina, plans to take up golf and fishing when the weather breaks this spring.

The couple wanted a comfortable retirement community. "We really felt more comfortable here than anywhere else," Bill said. "We haven't changed our minds either."

The couple has five kids from coast to coast, along with 10 grandchildren and six great-grandchildren. They used to spend summers visiting family in a camper. Their daughter, son-in-law and several grandchildren live in Lynchburg near The Summit.

"When we first walked in to visit, three or four people were there



and they were just so friendly and welcoming," Charlotte, a retired registered nurse, said. "When you move a long way, you have to leave your friends and so making more friends is important to me and The Summit is very friendly."

There is another nice perk. For a couple that endured snowstorms in

Wisconsin and Vermont, waking up to a lovely Virginia snow came with a surprise.

"When I got up, the sidewalk was shoveled," Bill said.

A maintenance-free Life Plan Community with plenty of friends sums up life at The Summit.

Advantage Club makes move to The Summit smooth transition

Dan and Judy Robertson spent nearly five years getting to know residents and team members of The Summit before moving in.

“We met a lot of people by attending events. We’re very happy we chose The Summit,” Dan said.

After a friend encouraged them to join the Advantage Club, the Robertsons started attending social events, wine tastings and day trips with other residents.

By planning ahead five years, the couple were at the top of the list when they were ready to move to The Summit.

“There is no disadvantage to the Advantage Club. There are lots of opportunities and you get to meet a lot of people and it’s a really great way to decide if you are comfortable here,” Dan said.

Dan, a retired engineer, and a Judy, a retired nurse, met on a blind date at Duke University. They have lived in Lynchburg for 51 years.

Last January, they let Marketing Director Brenda Dixon they were ready to move when an apartment became available.

“We were ready to give up all the maintenance and headaches with homeownership,” Dan said.

Being part of the Advantage Club made the transition easier. “We liked the people already, but we have made new friends. We feel like we keep in touch and socialize more being here,” Judy said.

The couple, who has two children and three grandchildren, work out at the Jamerson YMCA and attend fitness classes.

The Robertsons are glad they made the move. “The staff really work to get to know you and make you comfortable,” Judy said.



“There is no disadvantage to the Advantage Club. It really was a helpful tool in choosing the best place for us.”

— Dan Robertson —



New Year's Toast

Residents of The Summit dance and dine the night away with special friends and special toasts during a New Year's Eve Masquerade Ball.





Christmas Celebrations

Christmas festivities at The Summit brought joy to residents and team members alike, including the annual tree lighting, Christmas parties and Christmas hall parade through Assisted Living.





Residents celebrate Over 100 Club

Hu Cocklin knows just what he would tell his younger self. “Be optimistic. Life is pretty good. People are pretty good,” the 100-year-old said.

Cocklin is part of the Over 100 Club at The Summit, joining Agnes Erwin, 101; Gene Lehman, 100; Virginia Marshburn, 100; and Alma Irvine, the oldest at 106. Irvine and Marshburn have been residents of The Summit since it opened in 2003, making them among the community’s original residents.

Irvine traveled frequently to other countries over the years. “I’ve been able to meet people in different parts of the world and they are all very interesting.”

She celebrates each birthday. “I’m just proud of having lived this long,” Irvine said. “As long as everything is going alright, I feel fine.”

Marshburn, the youngest member of the club by a few months, said longevity is in her genes. “My mother lived to be 99 and three-fourths,” she said.

A retired teacher, Marshburn celebrated the century mark with party attended by friends and family. “I celebrated all week long,” she said.

Marshburn is most proud of her family, including her children, grandchildren and great-grandchildren.

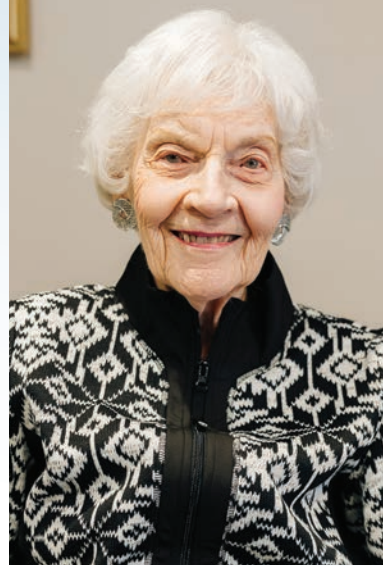
“Be optimistic. Life is pretty good. People are pretty good.”
— Hu Cocklin



Alma Irvine



Agnes Erwin



Virginia Marshburn



Gene Lehman

Lehman had a family gathering to celebrate her 100th birthday. As for any secret to longevity, she credits her upbringing.

“I just had good parents,” she said. She is most proud of her family.

Erwin is pleased to see her children, grandchildren and great-children living successful lives. Encouraging the younger generation to stay in shape, Erwin said she doesn't have any secrets to a long life.

“If I had any secrets, I would have shared them directly,” she said with a smile.

Cocklin, who also praised his children, said the key is moderation in all things. “Don't over do it. Don't under do it,” he said.

Hitting the century mark last April didn't usher in major change.

“It was about the same as crossing 90. I didn't notice much difference,” he said.



Hu Cocklin





The Summit recently hosted a meet and greet with members of the Lynchburg Police Department as a thank you from residents and team members.

The Summit launches Crown Club

To welcome new neighbors, The Summit launched the Crown Club in January.

The Crown Club is an exclusive community for cottage and hybrid home depositors to provide valuable information and resources before moving in.

“We wanted to create a fun club with events so depositors can get to know their neighbors,” Marketing Director Brenda Dixon said.

The Summit is also encouraging potential residents to plan ahead by joining the Advantage Club, which includes two lists: one for those not ready to move-in and the ready now list.

“The future list is for people planning ahead that want to get in line for a priority date based on when they joined,” Dixon said.

The ready now list is for those ready to move in the next 12 months. The Summit has wait lists for all cottages and apartments.

The Summit welcomed nearly 140 new households to the Advantage Club in 2024, demonstrating its continued popularity.

While this growth has led to longer wait times for existing homes, those planning a move to The Summit in the next two years have a great option: consider a Hybrid Home.

New construction offers the advantage of a predictable timeline, giving you plenty of time to prepare and ensuring you know exactly what to expect. This makes planning your move significantly easier and can be a great option to join The Summit community.

Upcoming Crown Club events include:

Resource Fair in The Summit Dining Room | Thursday, Feb. 27, 11 a.m. - 1 p.m.

Enjoy lunch while connecting with valuable resources: downsizing specialists, MG Moving Company, real estate representatives, insurance representatives, professional organizers, and more.

Tours and Tastings at the new Information Center | Friday, March 21, 2 p.m. - 4 p.m.

Explore three model Northside Cottage under construction (Chatham, Bedford, and Altavista) with transportation provided. Enjoy a taste of The Summit at our Information Center. Please note that we will not be able to tour individual cottages during this event.

Lunch at Charley's Restaurant | Friday, April 18, 11:30 a.m.

Building a strong community starts with connection! Join us for a neighborly luncheon at Charley's Restaurant. It's the perfect chance to meet your future neighbors at The Summit and enjoy a meal together.

*Call the Marketing Team at
434.333.2138 to learn more.*



Happy Halloween

The T'Birds, Pink Ladies and Waldo made appearances at The Summit's annual Halloween Party, including Brunswick Stew, pumpkin carving and Kettle Corn.





Winter Wonderland

A winter storm blanketed The Summit campus with several inches of snow. For residents, maintenance-free living means waking up to several inches of snow and shoveled driveways, sidewalks and roads.



Inaugural Holiday Brunch & Market

The Summit joyfully celebrated its inaugural Holiday Brunch and Market on December 7, 2024. The event was a resounding success, bringing together residents, families, and local supporters for a festive morning filled with delicious food, holiday crafts, and a vibrant vendor market.

Attendees enjoyed a delightful brunch, had the opportunity to take photos with Santa and Mrs. Claus, and explored a variety of crafts and vendor booths, all contributing to the holiday spirit.

With sponsorships from many of The Summit's local vendors, the event was able to raise \$5,000 for The Summit Benevolent Fund, a vital resource that provides financial assistance to residents facing unforeseen challenges, ensuring they can continue to call The Summit their home.

“This generosity exemplifies the spirit of neighbors helping neighbors, a core value at The Summit. This fun event was able to raise awareness and support of the benevolent need of our residents,” said Jodi Leonard, Vice President of the Virginia Baptist Homes Foundation. Plans are already underway for next year's event, promising even more holiday cheer and community engagement to celebrate the holiday season within the Lynchburg community.

The Virginia Baptist Homes Foundation proudly serves as the philanthropic arm of LifeSpire of Virginia and its senior retirement communities, which includes The Summit.

For more information about its mission and work, visit their website at LifeSpireLiving.org/give.

Event Sponsors

Holly Jolly Hero

- L.G. Flint, Inc.
- RSG Landscaping LLC

Candy Cane Champion

- Jamerson-Lewis Construction

Snowflake Supporter

- Tamara Lemon, A Fresh Take on Organizing
 - MG Moving Services
 - Perfectvision
- Piedmont Window Solutions

Reindeer Rock Star

- J Photography
- Quality Technologies LLC
 - WasteCo



HELPING HANDS

Residents, team members offer volunteer service to community

Once a month, residents gather to wrap peanut butter and jelly sandwiches, trail mix and cereal. The items are taken to Lynchburg Daily Bread.

The mixed items are given to those in need for breakfast or snack on the go.

“The residents absolutely love it,” Director of Resident Services Tiffany Coffey said. “We always have a good turnout on Volunteer Mondays.”

Volunteerism and community service have been foundational to The Summit since opening its doors to the first residents 21 years ago.

Virginia Baptist Homes Foundation, the philanthropic arm of LifeSpire of Virginia, not only encourages community service, but tracks the hours through a social accountability report quarterly.

Coffey shares the data with residents and team members. “Spreading the word really opens the residents eyes to what things we can all participate in and make a difference in the Lynchburg area,” she said.

The opportunities for volunteering in the Lynchburg area are endless. Residents and team members recently sorted boxes at the Blue Ridge Food Bank. “Team members and residents join together to do that on behalf of The Summit,” Coffey said.

Some Independent Living residents read to residents in Assisted Living. Residents playing piano for a worship service on campus count towards the social accountability report too.

Jessica Newmark, a resident, is active with InterFaith Outreach, which provides for the less fortunate in the community.

For the organization's "Home Sweet Home" program, residents donated household items they no longer need.

"We were able to provide a lot of household items to families in need over the holidays," Coffey said.

This winter, Summit residents and team members collected and packed 20 bags of snacks for local school children through Parkview Community Mission's initiative to combat hunger.

"It's a blessing. The Summit is family oriented and I feel like we all love to give back to the community in whatever way we can," Coffey said. "To have our team members and residents come together and do that as one really shows what The Summit is all about."



Chaplain begins full-time spiritual support duties to residents

The Summit recently welcomed Chaplain Jacob Palma to full-time ministry. This new position was established last year, and Chaplain Palma, who has served the Life Plan Community on a part-time basis for the past year, transitioned to his full-time role in January.

"This means more time with the residents," Palma said. "I'll have the opportunity to connect with them on a deeper level."

Palma works with the Spiritual Life Committee to lead worship services and programs to support spiritual growth and provides pastoral care for residents and team members in crisis or transition.

Palma plans to offer more Spiritual Life services, including a grief support group and religious book study. "I want to provide more ways to care for them spiritually," he said.

The Virginia Baptist Homes Foundation, the philanthropic arm of LifeSpire of Virginia, established the Spiritual Life Fund in 2019 to support chaplains and the spiritual development in each LifeSpire community.



Upcoming Events at The Summit



Meet the Artist Reception | March 7, 2 pm & April 11, 2 pm

Sherry Pope will showcase her collection of oil paintings on March 7. The Lynchburg Art Club will showcase a collection of works. Refreshments will be served. Ten percent of all art sales benefit The Summit Benevolence Fund.

St. Patrick's Day Mixer | March 17, 2 pm

Join us for food, drinks and live music in the Blue Ridge Commons. This event is exclusively for residents, Advantage Club members and Crown Club members.

Lunch & Learn | April 9 or May 1

New to The Summit? Choose your date (April 9 or May 1) and join us at 11:30 a.m. for a lunch and learn about downsizing, real estate options and The Summit's Phase 2 expansion plans.

Caregivers Support Group

The Summit hosts a Caregiver Support Group the second Wednesday of each month at 1:30 p.m. in the Prayer Chapel. The support group is provided in conjunction with the Alzheimer's Association to help caregivers build a support system with people who understand.

Register for events by calling 434.333.2138 or online at SummitLynchburg.org/Events.

Team Members of the Month

The Summit's "Team Member of the Month" program gives residents a wonderful opportunity to recognize the exceptional care and service provided by our team. Residents nominate team members, and the honorees are selected for this recognition.

Winners are celebrated at the monthly Town Hall meeting and receive a gift. Congratulations to all of our recent winners! This program provides a meaningful way for residents and families to express their appreciation for the incredible team at The Summit.



Dawn Steele
November 2024



Rashoun Watts
December 2024



Alina Dinwiddie
January 2025



Sales center opens

To meet the needs of an ever-growing campus, The Summit recently opened a sales center on Enterprise Drive in Lynchburg.

The new sales center, located across the street from The Summit, offers a full service experience of the new expansion opportunities, including an 18-cottage neighborhood, Hybrid Homes, memory support, a wellness center with indoor pool and enhanced dining venues.

Prospective residents can review floor plans, campus maps and discuss custom finishes in a relaxed and comfortable atmosphere.

Decorated with colorful photographs of campus life and amenities, the sales center creates a clear picture of all the Life Plan Community has to offer.

Your journey to The Summit begins in the sales center with an experienced and caring team ready to make the transition a breeze.

Call the Marketing Team at 434.333.2138 to make your appointment today or stop by the Sales center at your convenience.



The SUMMIT

A Life Plan Community

1400 Enterprise Dr
Lynchburg, VA 24502
SummitLynchburg.org

NONPROFIT ORG.
U.S. POSTAGE PAID
LYNCHBURG, VA
PERMIT NO. 869



1400 Enterprise Dr | Lynchburg, VA 24502
Phone 434.333.2138 | SummitLynchburg.org